



Introducing Pharos An International Consortium of Photoarchives

IFLA – Columbus, Ohio
August 15, 2016

Inge Reist
Director, Center for the History of Collecting
The Frick Art Reference Library

What are photo archives?



- historical collections of photographic reproductions of works of art, many never published elsewhere
- Rich in documentation about the work: condition, attribution, ownership, etc
- browsing collections organized by medium, nationality, and/or artists
- richly annotated by trusted scholars, often with opinions never subsequently published

Early drawings and oil sketches by Edward Hopper (1882–1967) from the Kennedy Gallery archives

Hopper, Edward
Boy Perched on Table

100

1 gift Kennedy Galleries, Inc., New York 2/14/15

Frick Art Reference Library
10 East 71st Street
New York, NY 10021

ARTIST: Hopper, Edward DATE: 1907
TITLE: Boy Perched on Table
SIZE and MEDIUM: 8 x 6 1/2" pencil
STOCK NO: A144331c 13,943

20005721 13992



Hopper, Edward
Bicyclist

1 gift Kennedy Galleries, Inc., New York

Frick Art Reference Library
10 East 71st Street
New York, NY 10021

ARTIST: Hopper, Edward DATE: 1907
TITLE: Bicyclist
SIZE and MEDIUM: 3 3/8 x 4 3/8" pencil
STOCK NO: A144331c 13,946

20005722



Hopper, Edward
House at Eastham

100

1 gift Kennedy Galleries, Inc., New York 2/16/15

Frick Art Reference Library
10 East 71st Street
New York, NY 10021

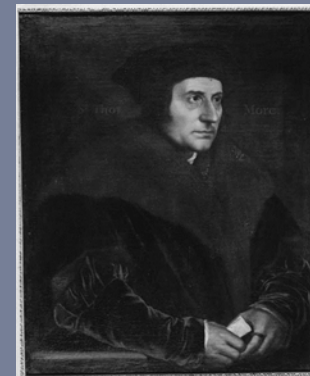
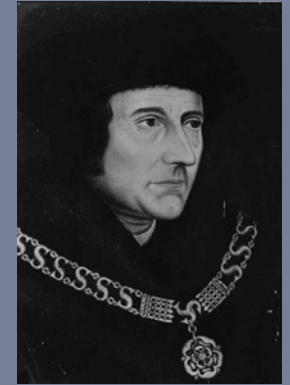
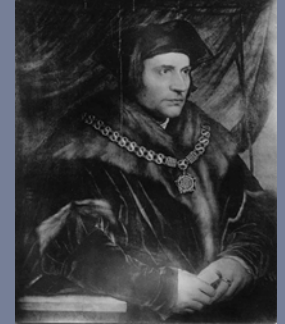
ARTIST: Hopper, Edward DATE: 1907
TITLE: House at Eastham
SIZE and MEDIUM: 11 1/2 x 14 1/2" oil on paper
STOCK NO: A144331c 13,947

20005723

TAYLOR & DILL, INC.
45 E. 60th ST.
N. Y. CITY 10011
2389



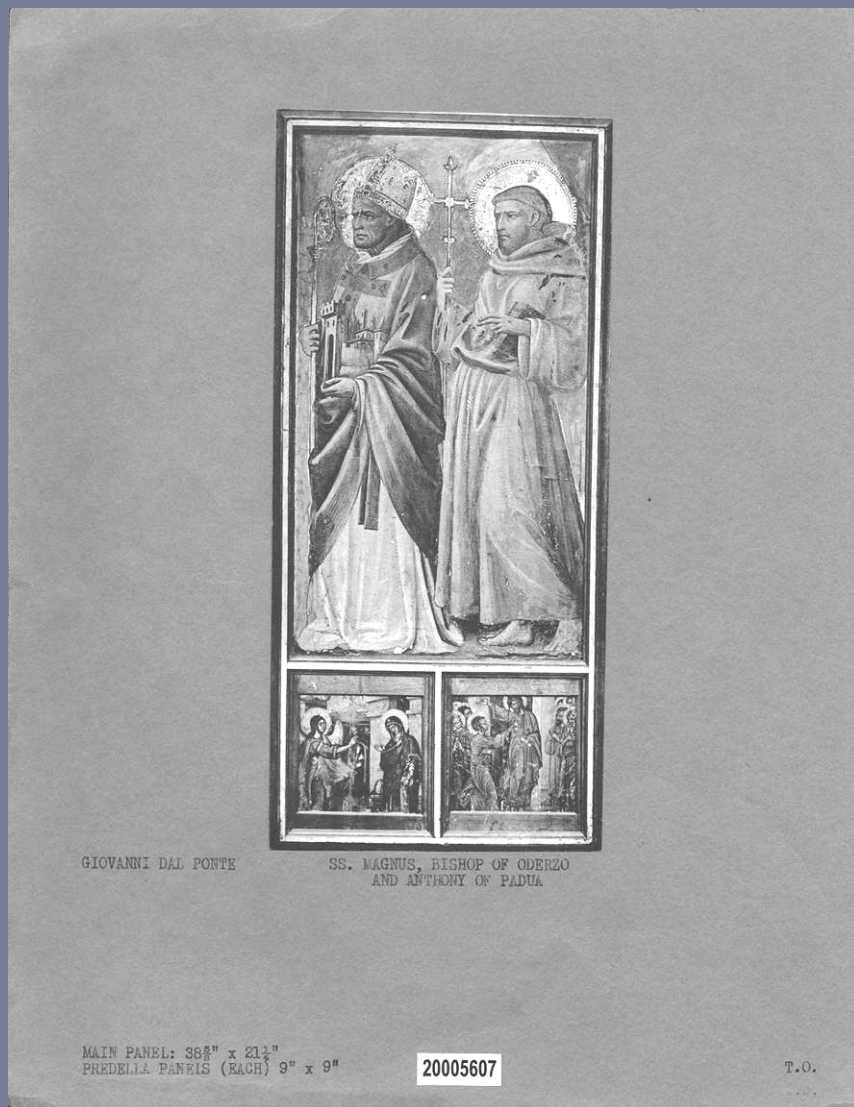
Photograph of Holbein's *Sir Thomas More* with 9 copies or versions



Madonna and Child attributed to a follower of Giovanni Bellini
(Fogg Museum, Harvard University)



The curators at the Philadelphia Museum of Art were unaware that this panel by Giovanni dal Ponte (1385-1437) once had a Byzantine predella attached to it until they found this reproduction from 1906 in the Frick's photoarchive





MABUSE, JAN GOSSART VAN

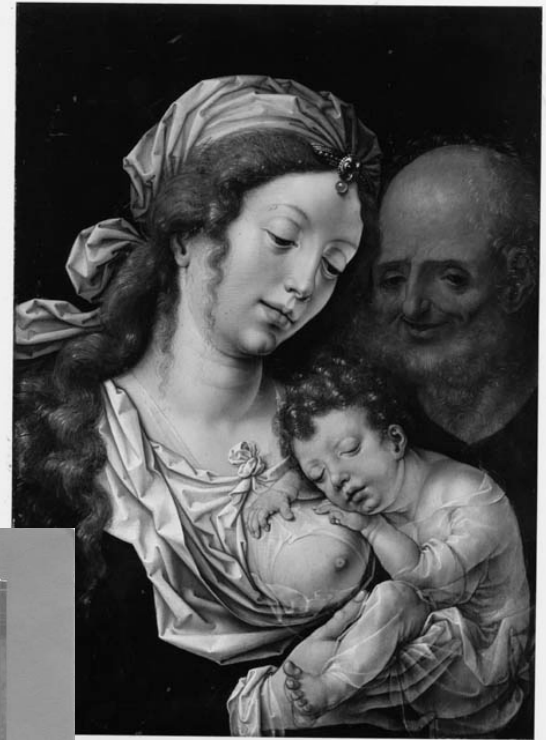
HOLY FAMILY

MUIS
HOUS

(WITH DETAIL)

OIL ON PANEL
51.4 x 96.5 cm.

20005226



HOLY FAMILY
(DETAIL)

MUSEUM OF FINE ARTS
HOUSTON

T.O.

Changes Over
Time

59.5 X 37

on front

Das umstehend fotografierte Bild ist ein gut erhaltenes, sehr charakteristisches Werk von Jan Gossaert -

Walter J. Friedländer

Berlin, D. 13. VII. 1929.

PURCH MME BRIERE JUL 1946

Mabuse für Friedländer

a version was in
Mantua di arte

p. 52 X 41

Entese
Villa Masini

Lucca

1960 (18)

Dr Berenson in
Berlin summer 1963
said he
had had st. J.
painted out

RM 2/6

707-B
E

DATE: (1) 3. 1325. (CONTINUED ON DETAIL)

ENGRAVINGS:

REPRODUCTIONS: Cooper, London W-5944 (FARL negative); source "c", fig. 552 (as "Florentine, between Giovanni da Ponte and Masolino"); source "a", pl. fol. p.166, pl.128, fig. 29 (as Masolino da Panicale) (in collection of Senatore Contini-Bonacossi, Florence); source "f" (see "Detail 1") (as Masolino da Panicale); (f) Christie's Season, 1980, p.6 (as School of Fra Angelico).
Salmi, "Masaccio", 2nd edition, 1948, pl.184 (as Masolino da Panicale).

EXHIBITIONS: (h) On long loan at the Palazzo Vecchio, Florence (placed there by the Italian state) (g) (see Collections, continued, on "Detail 1").

COLLECTIONS: (a) Duke of Leeds and Other Collections Sale, Christie's, London, June 20, 1930 (64) (from "Different properties" section) (as School of Fra Angelico) (Belleli, 11575.); (c) formerly Contini Bonacossi, Florence; (f) it was sold from that collection during World War II; in 1949 it was on loan in the Bavarian State Paintings Collections (g) (presumably in the Alte Pinakothek, Munich) from the "Collecting point" (g) (of pictures, dispersed from their collection, found in Germany after World War II by U.S. army officials) (f) (as Masolino da Panicale); (CONT'D ON DESCRIPTION: (a) "School of Fra Angelico: The Madonna in pink and blue robes, (DETAIL 1) seated, nurturing the Infant Saviour."

(b) Stylistically this Madonna of Humility is to be placed within the circle of Lorenzo Monaco and Giovanni del Ponte, rather than that of Fra Angelico, with whom there is no affiliation. Attributed tentatively to Dr. Offner's "Master of the Griggs Crucifixion", from comparison especially with the Madonna formerly owned by Fleischmann (Munich dealer) and in the FARL file of the master's works as brought together by Dr. Offner in 1933.

(c) Listed by Berenson, 1963 (posthumous publication) as Florentine, between Giovanni da Ponte and Masolino; by the "Master of 1519".

(d) Not by the Master of the Griggs Crucifixion, nor Masolino da Panicale: by a very rare and beautiful Florentine master of about 1425. To be classified merely as Florentine School, 15th century.

(e) Had been attributed to Masolino da Panicale by Longhi, in 1940. (STATE)
BIBLIOGRAPHY: Scharf, in "Zeitschrift für Kunstgeschichte", 1932, v.1, p.312 (in "Notizen und Nachrichten" section, as a picture by Masolino da Panicale, sold in 1930 as school of Fra Angelico, which Berenson omits from his "Italian Pictures of the Renaissance", 1932.); Salmi, "Masaccio", 2nd edition, 1948, p.111, 211-212 (Tav. 184) (as Masolino da Panicale).

(CONTINUED ON DETAIL)

- (a) Catalogue, Duke of Leeds and Other Collections Sale, June 20, 1930, p.12 (64) (priced copy).
- (b) FARL (DMH), October 1947).
- (c) Berenson, "Italian Pictures of the Renaissance: Florentine School", 1963 (posthumous publication), v.1, p.218.
- (d) Dr. Federico Zeri, at FARL, November 29, 1965 (DMH) 1.
- (e) Longhi, in "La Critica d'Arte", July-December 1940, v.5, p.169-170.
- (f) Oertel, in "Die Kunst und das Schöne Heim", April 1949, v.47, no.1, p.1-2, 5.
- (g) FARL (DMH, January 1970).
- (h) Dr. Federico Zeri, letter dated Mantua, January 16, 1970 (in FARL file of correspond-
ence,

PHAROS: An International Consortium of Photo Archives – First meeting, January 2013





Bibliotheca Hertziana
Rome
(1,065,000)



Bildarchiv Foto
Marburg Germany
(2,000,000)



Courtauld Institute
London
(4,173,500)



Fondazione Federico
Zeri Bologna
(290,000)



Frick Art Reference
Library New York City
(1,346,000)



Getty Research
Institute
Los Angeles
(2,086,000)



I Tatti
Florence
(239,000)



Institut National
d'Histoire de l'Art, Paris
(750,000)



Kunsthistorisches
Institut Florence
(650,000)



National Gallery of Art,
Washington, D.C.
(7,600,000)



Paul Mellon Centre
London
(185,000)



RKD – Netherlands
Institute for Art History
The Hague
(7,000,000)



Warburg Institute,
London
(3,500,000)



Yale Center for British
Art,
New Haven
(132,000)

Primary objective for PHAROS



To establish a

- common research platform
- freely available
- includes the images and their formal documentation
- includes a space for aggregation, research, and sharing

News, Events & Publications

ResearchSpace Project [read more](#)

ResearchSpace Consultancy [read more](#)

digital.humanities

OXFORD UNIVERSITY DIGITAL HUMANITIES SUMMER SCHOOL

2015 Dominic Oldman and Barry Norton will be presenting again this year on Contextual Cultural Heritage Open Data and looking in more detail at the British Museum's CIDOC CRM Endpoint ...

Posted 22 Feb 2015, 12:05 by Dominic Oldman



CONTEXTUAL SEMANTIC SEARCH OF CULTURAL DATA

Contextual Search resolves issues inherent in existing search systems by providing accessible interfaces with the right level of precision and recall but retaining the ability to provide a detailed representation ...

Posted 1 Dec 2014, 04:10 by Dominic Oldman



SLIDES FROM OXFORD SUMMER SCHOOL Deep Thought: A real world ontology for real world representation, harmonisation and modeling. Slides available below.

Posted 30 Nov 2014, 07:12 by Dominic Oldman

Showing posts 1 - 3 of 39. [VIEW MORE »](#)



The ResearchSpace project is developing a collaborative environment for humanities and cultural heritage research using knowledge representation and Semantic Web technologies. The project includes work to;

- Provide accessible methods for utilising the CIDOC CRM standard and official extensions.
 - Integrate heterogeneous data without losing meaning or perspective
 - Create a Contextual Search System and other collaborative tools
- See out project pages for more details (tba)

Who's Using CIDOC CRM

Some projects are highlighted on this site - click here

Other projects that use CIDOC CRM are posted on the at http://cidoc-crm.org/uses_applications.html



Talk to us about contextual search systems

The ResearchSpace Team can offer consultancy for organisations and projects particularly on knowledge representation, Linked Data and Semantic Web techniques as well as a range of other digital research methods like natural language processing.

The team are uniquely placed within the British Museum possessing considerable knowledge and experience with access to a wide range of cross disciplinary expertise.

- Triple/Quad and Graph databases (as well as traditional relational systems).
- Semantic Web publication. Specialists in Semantic Search solutions.
- Semantic (Linked Data) open source software development.
- CIDOC Conceptual Reference Model and other established ontologies.
- Ontology implementation and design.
- Data mapping and transformation.
- Natural Language Processing
- Design and specifications transforming traditional approaches into practical Semantic Web applications.
- Specialist Project Management.



Contact Sarah Mengler on tel: 0207 323 8809

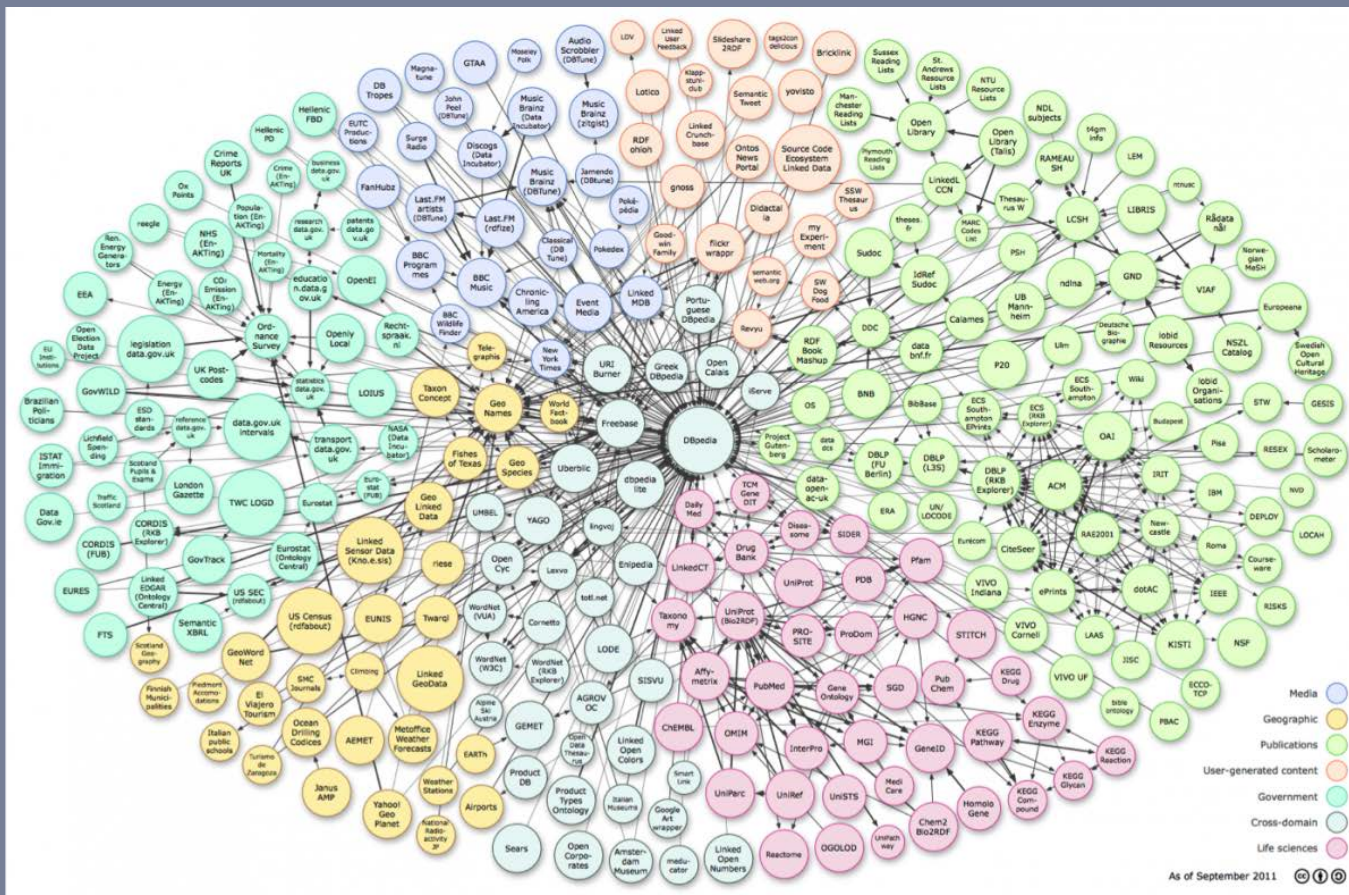
Realizing Lessons of the Last 20 Years: A Manifesto for Data Provisioning & Aggregation Services for the Digital Humanities (A Position Paper)

Open Data Institute

British Museum CIDOC CRM SPARQL Endpoint receives perfect score from Open Data Institute in [comparison of Cultural Heritage open datasets](#).

CIDOC -CRM (International Council of Museums Committee for Museum Documentation – Conceptual Reference Model): A set of standards for the exchange of cultural heritage information

Linked Open Data: using the Web to connect related data that wasn't previously wasn't linked; a term used to describe a recommended best practice of exposing, sharing, and connecting pieces of information or knowledge



What are we aggregating?

- In time, more institutional partners
- Expand coverage to include Asia, Africa, and Latin America
- Access to more than 30 million images
- Access to metadata and scholarly annotations, never available in one place before
- Image = image and metadata



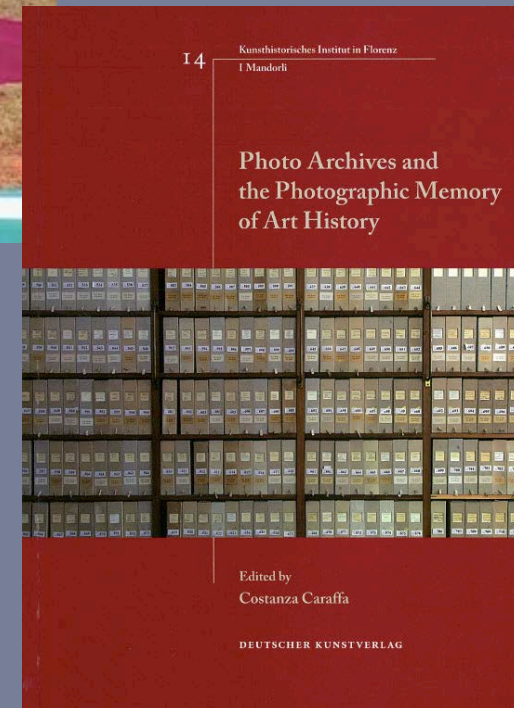
Traditional research outcomes

- provenance and attribution
- conservation research
- exhibition research
- publication and reception
- history of photography
- the history of art history



New research outcomes

- brought about by leveraging linked data, data visualization, computer vision, big data aggregation and analysis
- effect of conservation treatments over time
- study of the photograph itself; and how photography has changed the course of history



John Resig, Creator of JQuery;
Dean of Computer Science, Kahn Academy



Japanese Woodblock Print Search

Ukiyo-e Search provides an incredible resource: The ability to both search for Japanese woodblock prints by simply taking a picture of an existing print AND the ability to see similar prints across multiple collections of prints. Below is an example print, click to see it in action.



Search 223,128 prints:

Search by Image:

Upload a picture of a print to find similar prints across multiple collections.

 No file chosen

Update (NYC Asia Week 2014): 3 new sources added!

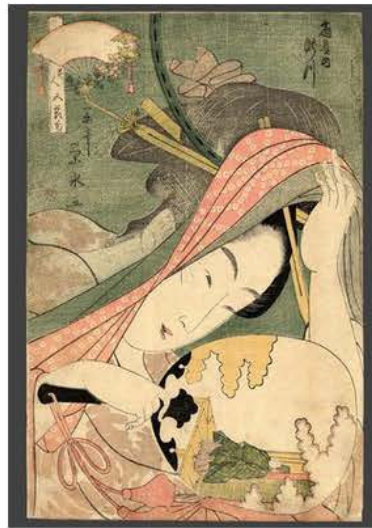
1. [The Art of Japan](#) (1,399 images)
2. [Robyn Buntin of Honolulu](#) (4,310 images)
3. [Scholten Japanese Art](#) (854 images)

Better data, hundreds of thousands of additional images, and better search capabilities are forthcoming. Sign-up to be notified when additional features are ready.

Subscribe for Updates

Early Ukiyo-e (Early-Mid 1700s)





Artist: [Ichirakutei Eisui](#)

Title: The Oiran Tsukasa of the Ogi-ya

Date: 1795-97

Details & Prices: [More information...](#)

Source: [The Art of Japan](#)
[Browse all 1,399 prints...](#)

Similar Prints

[Compare Prints...](#)



Eisui MFA



Eisui BM



Eisui Scholten



Eisui MFA



Eisui Rits

Discuss This Print

[Comments](#) [Community](#) [Login](#)

[Recommend](#) [Share](#) [Sort by Best](#)

Start the discussion...

Be the first to comment.

DISQUS

[Subscribe](#)

[Add Disqus to your site](#)

Alternate Images



Color vs. Black-and-White

Conservation



Repairs and possibly removal of later additions.

Conservation

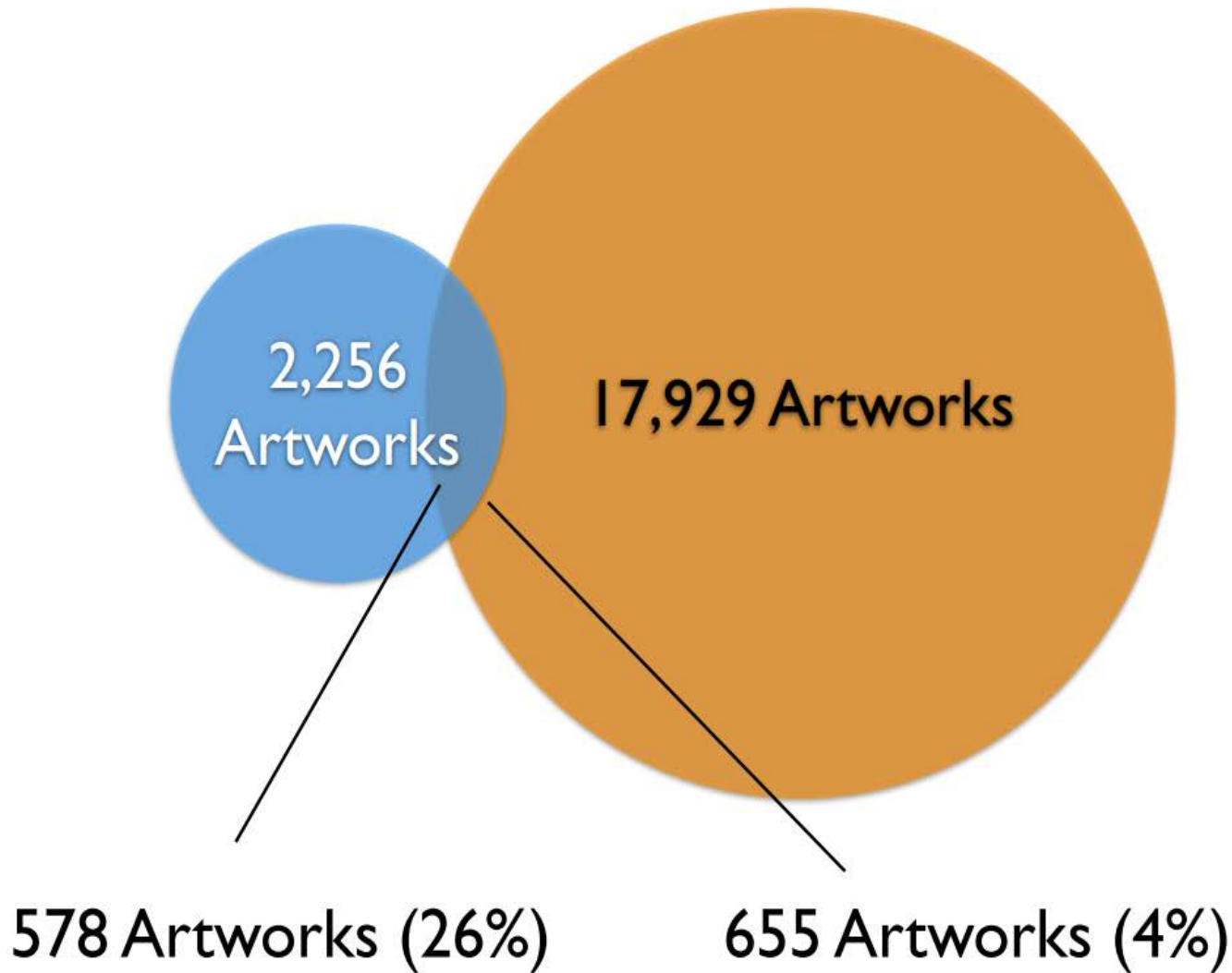


Analysis even spots dramatic conservation work.

Copies



15thC Frick-Zeri Artwork Matches



Comparison of text and images found in 3 photoarchives

**Florentine school, *Tobias and the archangel Raphael with three donors*, 15th c.,
present location unknown**

Source of information: [Frick Art Reference Library](#); [Zeri Foundation](#); [Biblioteca Berenson](#), [Fototeca](#)
In **black**: Information recorded in two or three db

Subject (Work of Art/ Photographs)

Tobia e l'arcangelo Raffaele con tre donatori; Dio Padre Benedicente

Attribution (Work of Art)

[Anonimo fiorentino sec. XV \(Attr. Offner, Classificazione Frick\)](#)

Anonimo senese sec. XV (Collezione Volpi; Asta American Art Association, 1916)

Neri di Bicci (Asta Palazzo Davanzati, 1934, Asta Christie's, 1967)

[Bicci di Lorenzo \(Classificazione Biblioteca Berenson\)](#)

[Apollonio di Giovanni \(Classificazione Fondazione Zeri\)](#)

Previous locations (Work of Art), in chronological order

Firenze, Collezione Volpi

New York, Asta American Art Association, 1916

G.K. Stetson

Firenze, Asta Palazzo Davanzati, 1934

Firenze, Galleria Bellini

New York, French & Co.

New Windsor (MD), Collezione Thomas S. Hyland

Greenwich (CT), Collezione Thomas S. Hyland

Londra, Asta Christie's, 23 giugno 1967

New York, Asta Sotheby's, 17 gennaio 1985

Date (Work of Art)

1400-1499

1435-1465

1400-1452

Photographs

[Broggi, 1914 ca.](#)

[American Art Association, 1916](#)

[Broggi, 1926-1930 ca.](#)

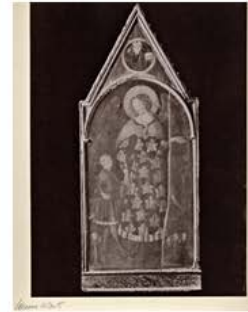
[French & co. 1950 ca.](#)

[Anonimo, 1959 ca.](#)

[A.C. Cooper, 1967](#)

[Anonimo, 1980-2000](#)

Photographs (in chronological order)



Zeri (Broggi, 1914 ca.)



Frick (A.A. Association 1916)



Zeri (Broggi, 1930 ca.)



Zeri (French & co. 1950 ca.)



Berenson (French & co. 1950)



Zeri (1959 ca.)



Berenson (Cooper, 1967)



Berenson (1980-2000)



PHAROS Art Research Database

Search 37,553 Artworks:

Search

Search

Browse All

Search by Image:

Upload a picture of an artwork to find similar artworks across multiple collections.

Upload an Image

Choose File

No file chosen

Search by Image

Paste Image URL

http://

Search by Image

Browse by Collection:

[Frick Library Photoarchive](#)

14,930 Artworks

[Fondazione Zeri](#)

18,988 Artworks

[National Gallery of Art Library](#)

3,635 Artworks



PHAROS

Browse All

Search

Search

Painting: Madonna con Bambino tra san Giovannino e un angelo



Similar Artworks



Score: 23

NGA

Artist [Antonio del Massaro \(Pastura\)](#)

Date 1450-1516

Type [Painting](#)

Medium tavola

Collection Salocchi
Firenze

Details [More information...](#)

Source [Fondazione Zeri](#)
[Browse all 18,988 artworks...](#)



Search 56,243 Artworks and 91,086 Images:

Search by Image:

Upload an image to find other similar images.

Upload an Image

No file chosen

Paste Image URL

Browse by Collection:

[Frick Library Photoarchive](#)

14,985 Artworks, 18,615 Images

[Fondazione Zeri](#)

18,987 Artworks, 31,095 Images

[Villa I Tatti](#)

11,480 Artworks, 16,514 Images

[Bildarchiv Foto Marburg](#)

Images.pharosartresearch.org

Eventually this beta test will include more than
220,000 images of works of Italian Art from:

Frick Art Reference Library
National Gallery of Art, Washington
Fondazione Zeri, Bologna
I Tatti Florence
Bildarchive Foto Marburg
Kunsthistorisches Institute Florence
Biblioteca Hertziana, Rome

